



# Installation and configuration manual with Solis Hybrid Inverter

**Pytes Lithium Battery**

**E-BOX series**

**with Solis S5 Series Hybrid Inverter**



**CONTENTS**

Bom List..... 3

1 Power Cable Connection..... 6

    Step1 ..... 6

    Step2..... 6

    Step3..... 6

2. Communication Cable Connection ..... 7

3. Set the Dip Switch ..... 8

4. Start up the System ..... 8

5. Parameters Setting and Checking on the Inverter ..... 8

    Step1 ..... 9

    Step2..... 9

    Step3..... 10

    Step4..... 10

    Step5..... 11

6.System Monitoring..... 11

## BOM LIST




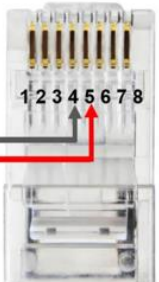
Before installation, you should prepare following items.

<b>Item</b>	<b>Remarks</b>	<b>Quantity</b>
<b>Power Cable (DC)</b>	a): Conductor cross-section: 50 mm <sup>2</sup> to 95 mm <sup>2</sup> b): Cable diameters: 14 mm to 25 mm c): Only copper cables may be used. d): The DC cables must be sized for the maximum battery voltage and the maximum battery current (see battery manufacturer documentation). e): Power cables head must be Amphenol type.	Depends on the number of batteries and the connection method
<b>CAN Cable</b>	CAN communication Terminal (RJ45 port) follow CAN protocol, to output batteries information	1
<b>Battery</b>	48100R / 48100C / 4850	Depends on the number of batteries and the connection method
<b>Inverter</b>	Solis	1

Definition CAN Port Pin for BMS is as follow.

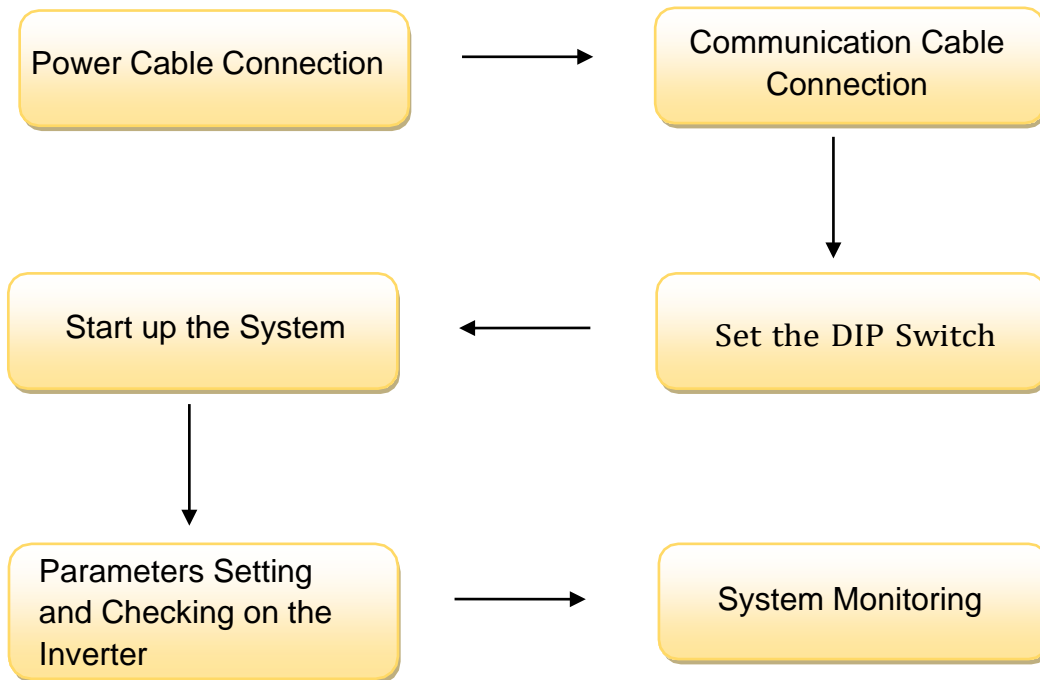
Click [here](#) to tell the version of 48100R you have.

**CAN port definition**

Version of 48100R	Pin number of com. cable
<p style="text-align: center;">A version</p>	<div style="display: flex; justify-content: space-around; align-items: center;"> <div style="text-align: center;"> <p>Battery</p>  <p>1 2 3 4 5 6 7 8</p> </div> <div style="text-align: center;"> <p>Inverter</p>  <p>1 2 3 4 5 6 7 8</p> </div> </div> <p style="text-align: center;">A red line connects pin 4 of the Battery connector to pin 4 of the Inverter connector.</p>
<p style="text-align: center;">B and C version</p>	<div style="display: flex; justify-content: space-around; align-items: center;"> <div style="text-align: center;"> <p>Battery</p>  <p>1 2 3 4 5 6 7 8</p> </div> <div style="text-align: center;"> <p>Inverter</p>  <p>1 2 3 4 5 6 7 8</p> </div> </div> <p style="text-align: center;">A red line connects pin 4 of the Battery connector to pin 5 of the Inverter connector.</p>

CAN port definition

## HOW TO INSTALL



**CAUTION:** If you want to get more inverter-related settings, please refer to the inverter user manual first.

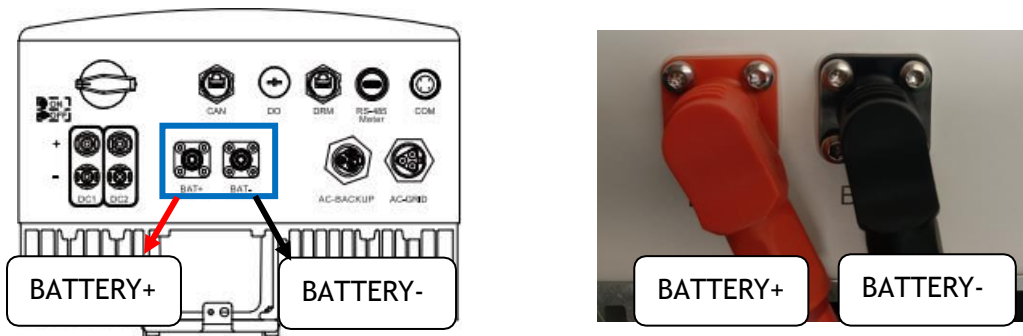
## 1. Power Cable Connection

### Step.1

Open the front housing of the Victron Energy Inverter/Charger.

### Step.2

Connect the red cable and black cable to the inverter connector as shown in Pic 1.1.



Pic 1.1

### Step.3

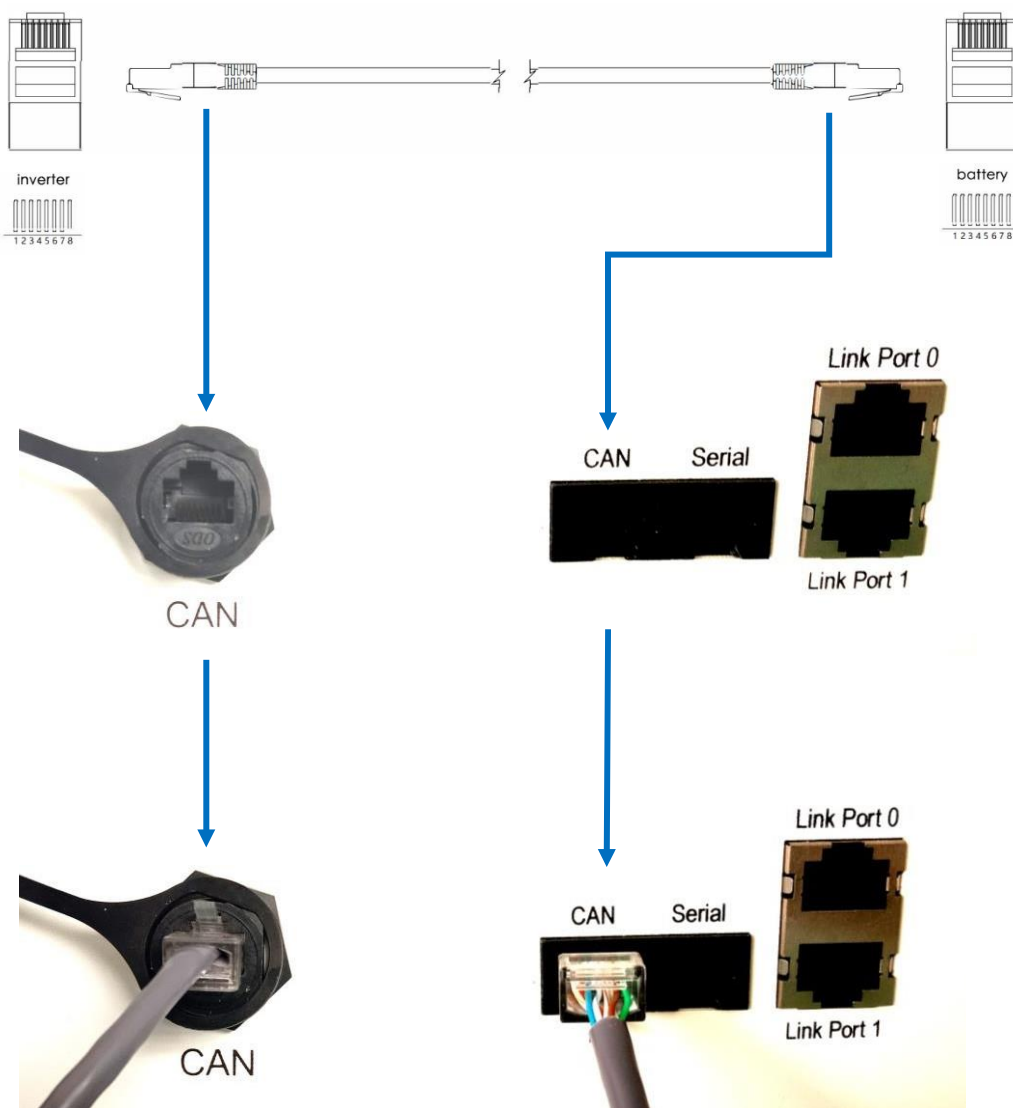
At the other end of the power cable, connect to the battery as shown Pic 1.2 (Ensure that the battery power switch is off)



Pic 1.2

## 2. Communication Cable Connection



Insert inverter end of the CAN cable into the controller at CAN. Insert battery end of the CAN cable into the battery at CAN. (Ensure the correct sequence of wires inside the CAN cable). as shown in Pic 2.1.



Pic 2.1

### 3. Set the DIP Switch

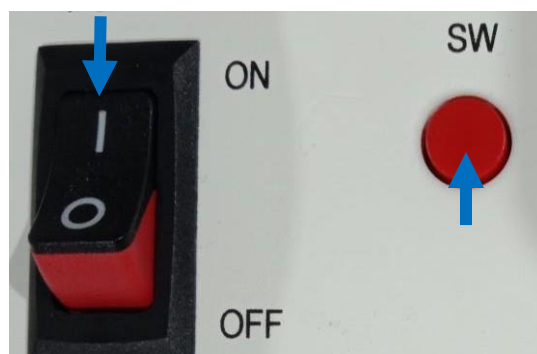
Set the DIP switch according to the version of 48100R you have, as shown in table below.

Version of 48100R	ADD setting
A and B version	
C version	

### 4. Start up the System

Start up the battery.

Firstly, press the power button on, next press the SW red ring button as shown in pic 3.1.





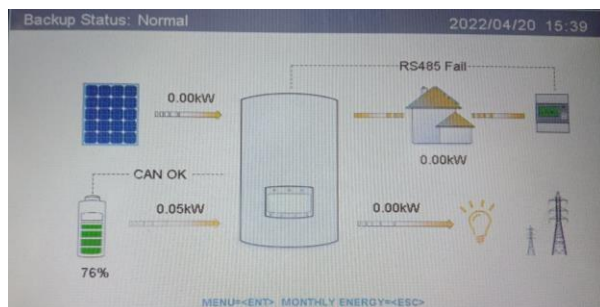
Pic 3.1

## **5. Parameters Setting and Checking on the Inverter**

**※CAUTION:** If you want more details about the batteries settings, please check the operating manual of inverter.

### Step1.

Check the inverter main page on the screen. as shown in pic 5.1.



Pic 5.1

### Step2.

Enter the submenu, there are four submenu in the main menu. Please set parameters respectively.

Click the Settings to set Time/Date, Address and Language as shown in 5.2.



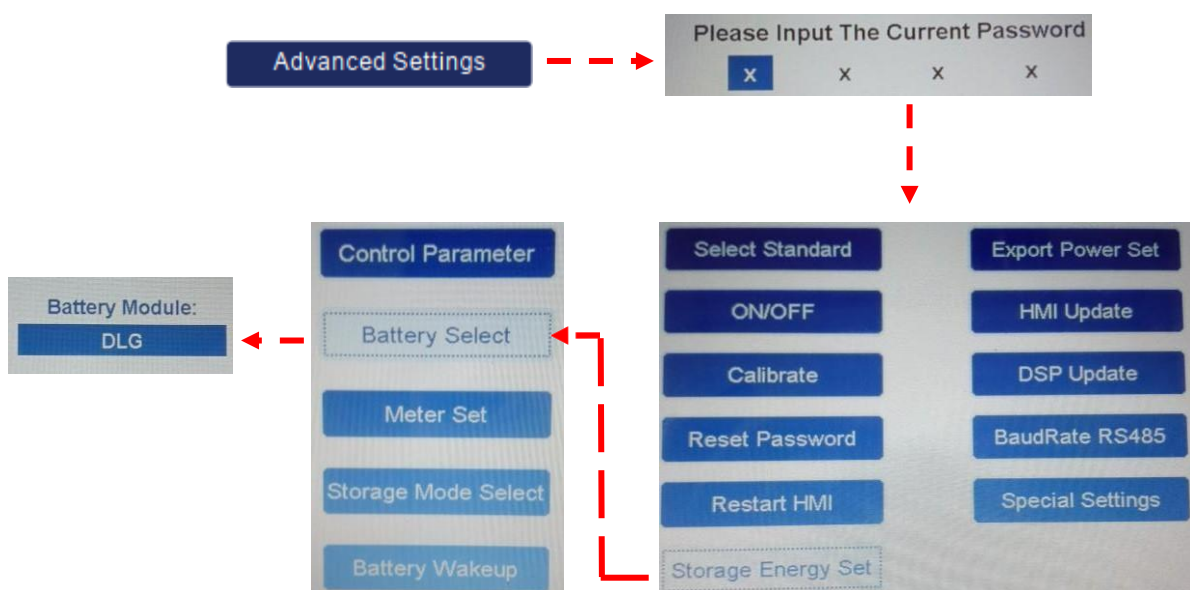
Pic 5.2

### Step3.

Click the Advanced settings. Input Password number 0010, then enter the submenu to set parameters as shown in 5.3.

There are many items in the submenu, please set them comply to the inverter manual for the details.

The most important parameters setting is the Storage Energy Set, click into the item and choose battery module DLG.



Pic 5.3

### Step4.

Click the information and check parameters as shown in 5.4.



Pic 5.4

### Step5.

Click the Advanced information and check Running Message as shown in 5.5.



Pic 5.5

## 6. System Monitoring

※CAUTION: If you want more details about system monitoring, please check the operating manual of inverters.